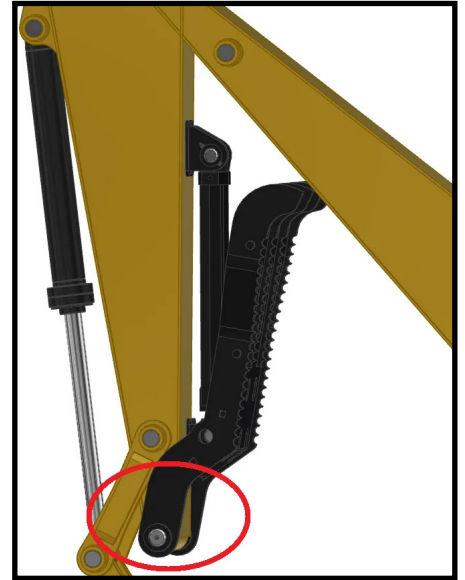


## HOW TO INSTALL YOUR NEW THUMB

### PIN-ON THUMBS

- 1** Remove the main stick pin.
- 2** Fit the Thumb over the coupler / bucket's stick pin.
- 3** Insert the stick pin into the thumb, coupler, and stick.
- 4** Bolt it on.
- 5** Rest the thumb on the stick.
- 6** Position the lock-plate wherever the bolt hole lines up.
- 7** If it's hydraulic, retract the cylinder completely and weld the mount to the stick at the point where it ends up.

If it's a manual thumb, the positioner can be welded wherever you want, but will alter where the thumb is at each position. A dimension from the stick pin to the bottom of the positioner baseplate (which is different for every thumb) can be provided upon request.



### WELD-ON THUMBS

- 1** Curl the coupler/bucket all the way in.
- 2** Mount the thumb as low as you can go on the stick.
- 3** Center the thumb horizontally and weld it into place.

